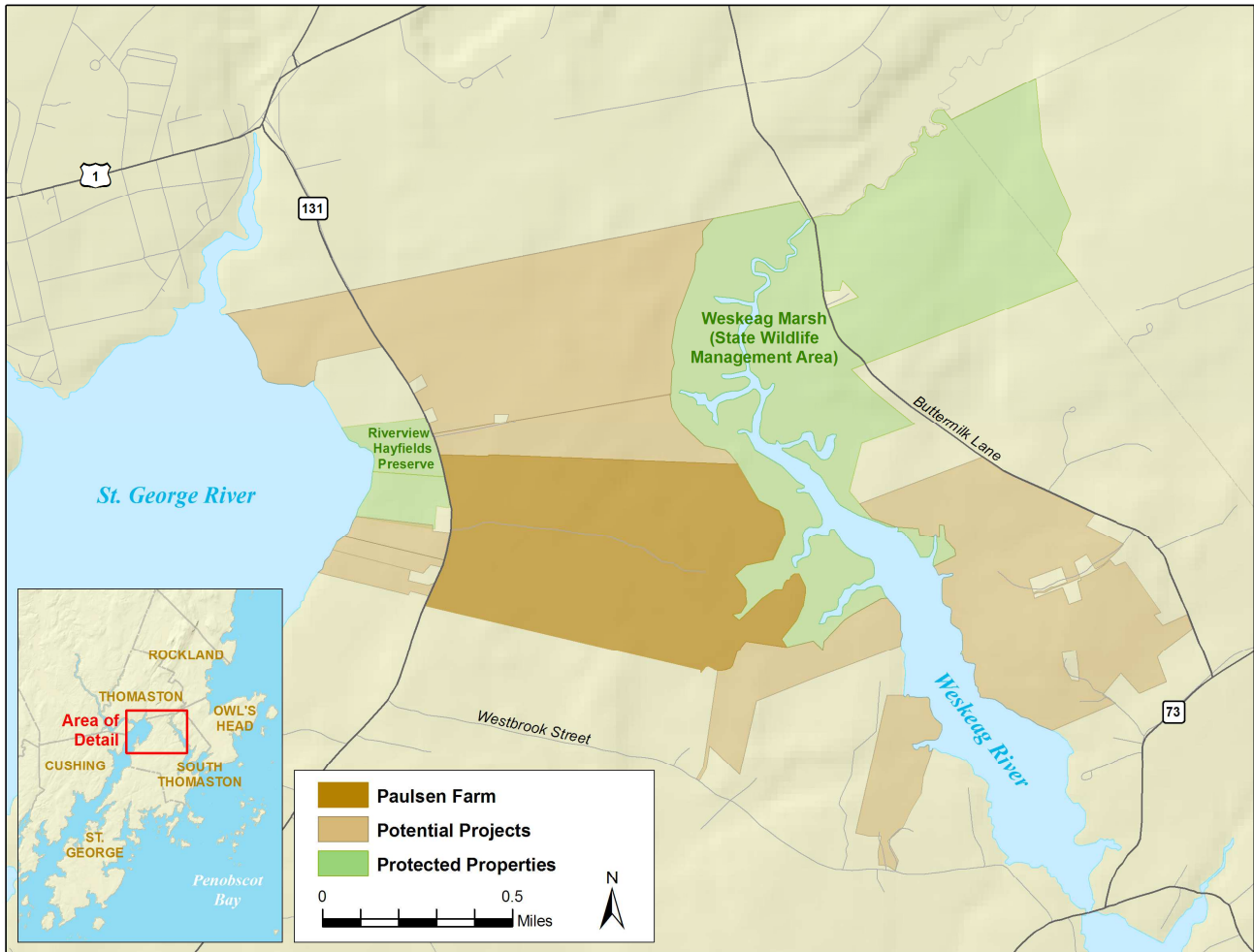


# Paulsen Farm Easement Campaign



The Georges River Land Trust is excited to announce the purchase of development rights on the Paulsen Farm - scenic gateway to the St. George peninsula. This easement creates a protected land bridge from the St. George River to the Weskeag Marsh, a flyway for migratory birds.

With this easement acquisition, GRLT has conserved 287 acres bridging these two rivers. We are 75% of the way to our fundraising goal, but we need your help. **Please give today to protect this working farm and wildlife habitat forever.**



**Location:** South Thomaston  
**Size:** 252 acres  
**Resources:** Hayfields, wetlands, woodlands,  
**Project Type:** Purchase of development rights  
 (conservation easement)  
**Project Cost:** \$272,000

*Working with communities to  
conserve special places.*





☆ Tidal restriction on the Weskeag, accounting for an extended low tide between the two rivers



“As a landowner, I have certain rights, but there are some, such as development, that I have no intention of exercising, so I choose to put my land in conservation. Our time on this earth is short, and maybe we can do a little good now and then.” *Donald Paulsen*

To donate to conservation of the Paulsen Farm, please contact Gail Presley, Executive Director, of the Georges River Land Trust at (207) 594-5166 or [gail@grlt.org](mailto:gail@grlt.org)